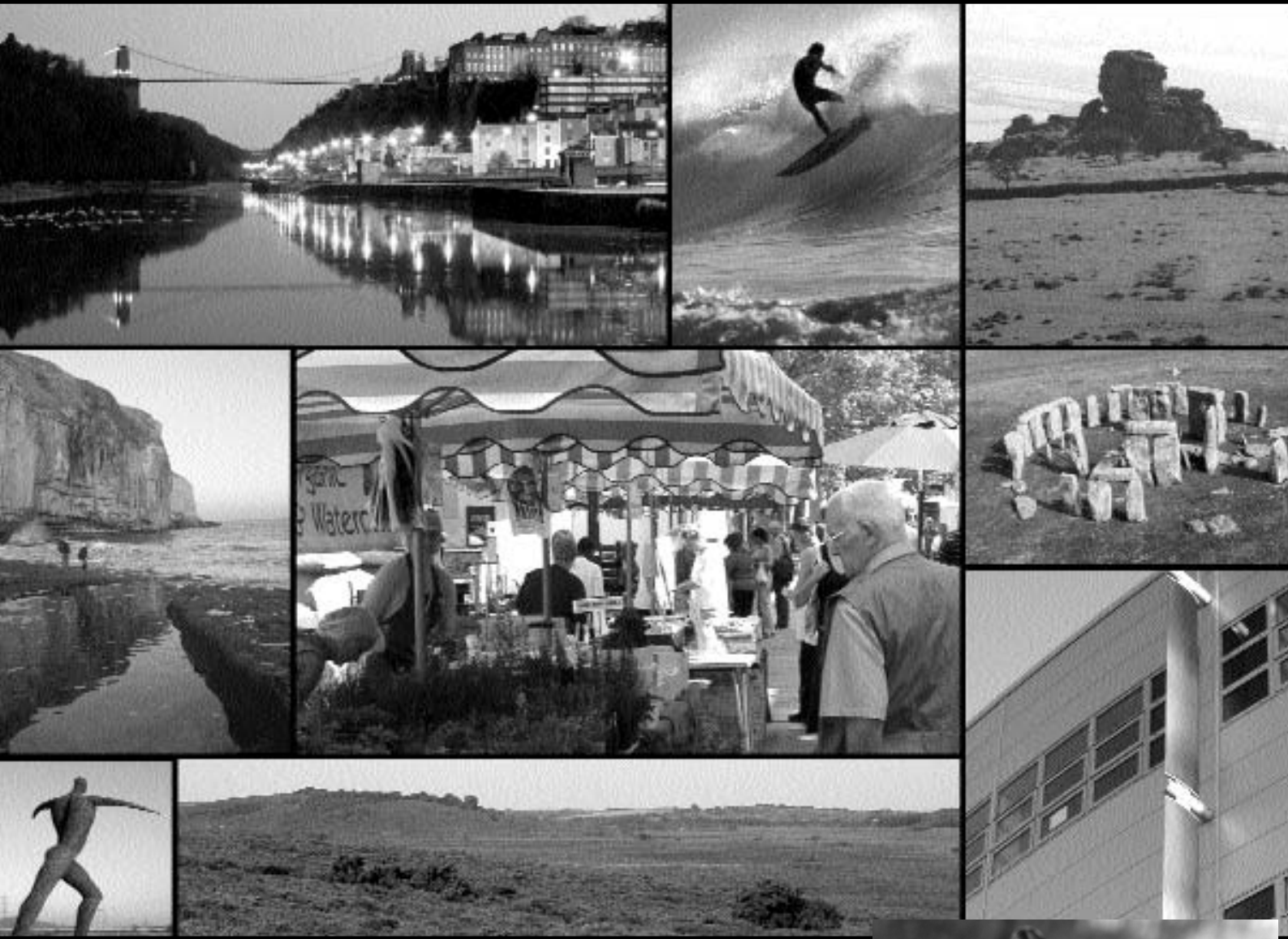


Our Environment: **Our Future**



*The Regional Strategy for the
South West Environment 2004 - 2014*

Implementation Plan



Our Environment: **Our Future**

The Regional Strategy for the South West Environment 2004 - 2014

Implementation Plan

Below are the actions that have been identified in developing the Regional Environment Strategy and through the consultation process. Most have been agreed by the lead organisations who are responsible for delivering them. Actions will be reviewed in the light of progress in delivering the Strategy. The actions have also been prioritised on a short, medium and long term timeframe covering the 10 years of the Strategy.

** Timescale: Short (2004 - 2007)

Medium (2007 - 2010)

Long (2010 - 2014)

Copies of the full Regional Environment Strategy and Executive Summary are available from the South West Regional Assembly.



Regional Priorities	Action	Who by Lead organisations partners		Timescale**	Links to Aims
Delivering the Regional Environment Strategy					
Conserve and enhance the South West's stock of environmental assets	<ul style="list-style-type: none"> ➔ Produce and regularly review Statutory Management Plans for Areas of Outstanding Natural Beauty and National Parks. ➔ Produce and regularly review a Biodiversity Implementation Plan. ➔ Produce and regularly review a South West Historic Environment Strategy. 	<ul style="list-style-type: none"> ➔ AONB partnerships, NPAs ➔ SWBP ➔ EH 	<ul style="list-style-type: none"> ➔ SWPLF, CA ➔ EN, WTs ➔ HEF 	<ul style="list-style-type: none"> ➔ Short ➔ Short ➔ Short 	<ul style="list-style-type: none"> ➔ All aims
Support and enhance partnership working	<ul style="list-style-type: none"> ➔ Carry out a review of environmental partnerships in the region to map links, existing mechanisms and gaps. ➔ Endorse the Regional Environment Strategy and enhance joint working to deliver priorities. ➔ Identify the need for and gain long term support for co-ordinators to link environmental interests into regional decision-making. 	<ul style="list-style-type: none"> ➔ REN ➔ EA, EN, EH, CA, RDS, FC ➔ EA, EN, EH, CA 	<ul style="list-style-type: none"> ➔ EA, EN, EH, CA, RDS, FC, regional and sub-regional partnerships ➔ NT, CPRE, RSPB, WTs, Woodland Trust ➔ SWPLF, SWBP, Objective 1 & 2 programmes 	<ul style="list-style-type: none"> ➔ Short ➔ Short ➔ Short 	<ul style="list-style-type: none"> ➔ All aims
Co-ordinate actions between regional and local partners to improve delivery	<ul style="list-style-type: none"> ➔ Review of environmental partnerships in the region to include sub-regional and local partnerships, and the links between them. ➔ Build on existing good practice by establishing mechanisms for improved communication and sharing of experience between environmental partnerships and organisations. 	<ul style="list-style-type: none"> ➔ REN ➔ REN 	<ul style="list-style-type: none"> ➔ Sub-Regional environmental partnerships (e.g. Environment Kernow, Environment Devon, HSW) ➔ Sub-Regional environmental partnerships (e.g. Environment Kernow, Environment Devon, HSW) 	<ul style="list-style-type: none"> ➔ Short ➔ Short 	<ul style="list-style-type: none"> ➔ All aims
Identify the resources needed to deliver agreed regional priorities	<ul style="list-style-type: none"> ➔ Carry out an analysis of regional funding and targets to investigate how this fits with regional environmental priorities, including how to expand successful initiatives such as Sustainable Development Fund for National Parks. ➔ Support INTERREG project to mainstream environmental objectives into project and programme funding. 	<ul style="list-style-type: none"> ➔ GOSW ➔ EA 	<ul style="list-style-type: none"> ➔ SWRA, EA, EN, EH, CA, RDS, FC, SWRA, SWRDA, NPAs, HSW ➔ SWRDA, GOSW, SWRA, Objective 1 & 2 programmes 	<ul style="list-style-type: none"> ➔ Short ➔ Short 	<ul style="list-style-type: none"> ➔ All aims



Regional Priorities	Action	Who by Lead organisations partners		Timescale**	Links to Aims
Delivering the Regional Environment Strategy					
Integrate environmental objectives into regional strategies	<ul style="list-style-type: none"> ➔ Establish mechanisms for 'environmental proofing' of all regional and local strategies within the context of sustainability appraisal. ➔ Develop a programme of work to take forward the environment driver in the Regional Economic Strategy. 	<ul style="list-style-type: none"> ➔ SWRA ➔ SWRDA 	<ul style="list-style-type: none"> ➔ EA, EN, EH, CA, SSW, GOSW, SWRDA, HSW, LAs ➔ REN, SWRA, GOSW 	<ul style="list-style-type: none"> ➔ Short ➔ Short 	<ul style="list-style-type: none"> ➔ All aims
Raise awareness, education, skills and training	<ul style="list-style-type: none"> ➔ Develop a regional environmental skills and training strategy. ➔ Investigate opportunities for capacity building on environmental priorities for non-environmental partnerships, for example Local Strategic Partnerships, Sub-regional Partnerships. ➔ Investigate opportunities for and effectiveness of targeted regional environmental awareness-raising campaigns. ➔ Produce a Prospectus for the region's protected landscapes. 	<ul style="list-style-type: none"> ➔ REN ➔ REN ➔ REN ➔ SWPLF 	<ul style="list-style-type: none"> ➔ FRESA group, HSW ➔ LSPs, SRPs, SWRDA, SWRA, LAs ➔ EA, CA, EH, EN, RDS, FC, GOSW, SWRDA, LAs, NT, HSW ➔ GOSW, SWRA, SWRDA, CA, NT, NPAs, AONB Partnerships, RDS 	<ul style="list-style-type: none"> ➔ Medium ➔ Medium ➔ Medium ➔ Short 	<ul style="list-style-type: none"> ➔ All aims
Improve our evidence base through research and information sharing	<ul style="list-style-type: none"> ➔ Support development of the Regional Environment Observatory. ➔ Agree a Protocol for sharing information between environmental organisations. ➔ Develop information and data about landscape character, its condition and sensitivity across the region to better inform decision making. ➔ Improve our understanding of the South West's urban environment. ➔ Review the Regional Environment Strategy's indicators and targets to ensure the Strategy's implementation can be monitored effectively. 	<ul style="list-style-type: none"> ➔ EA ➔ EA ➔ CA ➔ SWRA ➔ SWRA 	<ul style="list-style-type: none"> ➔ Observatory Management Board, EN, EH, CA ➔ EN, EH, CA, RDS, FC, SWRA, GOSW, SWRDA, HSW, REN ➔ Regional Observatory, SWPLF, NPAs, AONB partnerships, LAs, NT ➔ GOSW, LAs, REN, WTs ➔ Regional Observatory, EA, EN, CA, EH, REN 	<ul style="list-style-type: none"> ➔ Short ➔ Short ➔ Medium ➔ Short ➔ Short 	<ul style="list-style-type: none"> ➔ All aims



Regional Priorities	Action	Who by Lead organisations partners		Timescale**	Links to Aims
Regional Objective: Climate Change: To minimise greenhouse gas emissions and respond to the risks, challenges and opportunities presented by climate change.					
Integrate climate change into regional strategy and policy development	<ul style="list-style-type: none"> ➔ Carry out a review of key regional strategies to identify the extent to which adaptation to climate change has been included, and input to strategy reviews as appropriate. ➔ Integrate climate change adaptation and mitigation measures into development of the Regional Spatial Strategy and Local Development Frameworks. ➔ Support Local Strategic Partnerships in raising awareness of climate change issues through their community planning processes. 	<ul style="list-style-type: none"> ➔ SWCCIP ➔ SWRA ➔ SWCCIP 	<ul style="list-style-type: none"> ➔ SWRA, SSW ➔ SWCCIP, SSW, LAs ➔ LAs, LSPs 	<ul style="list-style-type: none"> ➔ Short ➔ Short ➔ Short 	<ul style="list-style-type: none"> ➔ Nature, Resources, Landscape, Heritage, People
Reduce the causes of climate change	<ul style="list-style-type: none"> ➔ Support development of a regional sustainable energy strategy covering use and supply of energy and links to transport. ➔ Investigate opportunities to co-ordinate and support sub-regional/ local sustainable energy plans through development of the regional sustainable energy strategy. ➔ Produce further guidance in Regional Spatial Strategy to support delivery of renewable energy targets and to help avoid damage to the region's environmental assets. ➔ Undertake landscape sensitivity assessments at County level to support delivery of sub-regional renewable energy targets and development of sub-regional renewable energy strategies. ➔ Investigate opportunities through development of the Regional Woodlands and Forestry Framework that woods/forestry can provide in mitigating the effects of and adapting to climate change. 	<ul style="list-style-type: none"> ➔ GOSW ➔ SWCCIP ➔ SWRA ➔ LAs ➔ FC 	<ul style="list-style-type: none"> ➔ SWRDA, SWRA, REN, RegenSW, Strategic Health Authorities ➔ LAs, County Energy Partnerships ➔ RegenSW, GOSW, EA ➔ County Energy Partnerships, CA, EN, GOSW, RegenSW ➔ Forest Enterprise, Woodland Trust 	<ul style="list-style-type: none"> ➔ Short ➔ Short ➔ Medium ➔ Short ➔ Short 	<ul style="list-style-type: none"> ➔ Nature, Resources, Heritage, People
Adapt to climate change	<ul style="list-style-type: none"> ➔ Support the establishment of a Programme Management Unit for SWCCIP to provide a central hub for expertise on climate change adaptation in the region. ➔ Investigate the impacts of climate change on nature conservation and support the development of adaptation strategies, including the establishment of a network of areas of sufficient size and richness to provide the optimum chance of survival for the priority species and habitats in the South West. 	<ul style="list-style-type: none"> ➔ SWCCIP ➔ EN 	<ul style="list-style-type: none"> ➔ EA, GOSW, SWRDA, SWRA, Research institutions ➔ SWCCIP, SWBP, research institutions, MARCLIM 	<ul style="list-style-type: none"> ➔ Short ➔ Short 	<ul style="list-style-type: none"> ➔ Nature, Resources, Landscape, Heritage, People



Regional Priorities	Action	Who by Lead organisations	Who by partners	Timescale**	Links to Aims
Regional Objective: Wiser Use of Natural Resources: To ensure that our natural resources are used sustainably, with minimum environmental damage and waste generation, so as to reduce pollution and protect the quality of the region's environment.					
Promote a strategic approach to management of the region's natural resources	<ul style="list-style-type: none"> ➔ Carry out a detailed study into the potential for increased use of secondary and recycled aggregates in the South West. ➔ Support integration of regional environment objectives into the Regional Woodlands and Forestry Framework. ➔ Address poor soil management practices, at farm and catchment scale, that cause erosion, compaction and runoff problems. ➔ Work with the livestock sector particularly dairy farmers, to reduce water pollution. ➔ Promote responsible and sustainable coastal fisheries that ensure healthy marine ecosystems as well as providing a livelihood for those in the industry. 	<ul style="list-style-type: none"> ➔ ODPM ➔ FC Framework Steering Group ➔ EA ➔ EA ➔ EA 	<ul style="list-style-type: none"> ➔ SWRA, RAWP, MPAs, LAs, minerals industry ➔ EN, EA, SWRDA, SWRA, GOSW, private forestry sector, Woodland Trust, Silvanus Trust ➔ RDS, NT ➔ RDS, NT ➔ GOSW, EN, Invest in Fish SW, DEFRA, SFCs 	<ul style="list-style-type: none"> ➔ Short ➔ Short ➔ Medium ➔ Medium ➔ Long 	
Promote sustainable use of natural resources	<ul style="list-style-type: none"> ➔ Set up a public sector environmental management group, to increase take-up of appropriate environmental management systems within the public sector and its suppliers. ➔ Review current arrangements for delivering advice on resource efficiency to households and businesses within the region, and develop a more integrated service. ➔ Develop a framework for increasing take up of environmental management systems within businesses in the region's eight key economic sectors and to support existing initiatives. 	<ul style="list-style-type: none"> ➔ GOSW ➔ GOSW ➔ SWRDA 	<ul style="list-style-type: none"> ➔ SWRDA, HSW ➔ SW Energy Efficiency Advice Centres, SW HECA Forum, HSW ➔ GOSW, HSW 	<ul style="list-style-type: none"> ➔ Short ➔ Short ➔ Short 	<ul style="list-style-type: none"> ➔ Resources, People
Reduce pollution to air, water and land	<ul style="list-style-type: none"> ➔ Set up a regional group to tackle diffuse pollution from urban and rural sources. ➔ Raise awareness among landowners and managers as to how to reduce diffuse pollution. ➔ Use research on regional health inequalities to identify areas for pollution prevention campaigns. 	<ul style="list-style-type: none"> ➔ EA ➔ EA ➔ Regional Health Observatory 	<ul style="list-style-type: none"> ➔ EN, RDS, research institutions, LAs, NFU, water companies ➔ RDS, NT ➔ EA, NHS Exec/GOSW 	<ul style="list-style-type: none"> ➔ Short ➔ Long ➔ Short 	<ul style="list-style-type: none"> ➔ Resources, Nature, People



Regional Priorities	Action	Who by		Timescale**	Links to Aims
		Lead organisations	partners		
Regional Objective: Wiser Use of Natural Resources: To ensure that our natural resources are used sustainably, with minimum environmental damage and waste generation, so as to reduce pollution and protect the quality of the region's environment.					
Minimise waste	→ Support delivery of the Regional Waste and Environment Strategies by increasing awareness of waste issues in the South West and encouraging people to minimise waste.	→ SWRA	→ EA, LAs, Waste industry, HSW	→ Long	
Deliver integrated coastal zone management	→ Investigate opportunities for delivering Integrated Coastal Zone Management in the South West.	→ GOSW	→ EN, EA, LAs, NT	→ Short	→ Nature, Landscape, Heritage, Resources, People
	→ Develop marine spatial planning to ensure our open seas are better managed, through establishing a clear structure for sustainable use and management of offshore areas.	→ EN	→ GOSW, EA, Invest in Fish SW, DEFRA, SFCs, WWF, NT	→ Medium	

Regional Priorities	Action	Who by		Timescale**	Links to Aims
		Lead organisations	partners		
Regional Objective: Food, Farming & Forestry: To enhance the ability of the food, farming and forestry sectors to provide the environmental and social benefits that people in the region need and expect, and help to secure a viable future for them.					
Encourage outstanding environmental management in the region's farming and forestry businesses	→ Ensure that the environment module of the South West Sustainable Farming and Food Strategy receives appropriate resources and that environmental champions are identified to deliver key initiatives.	→ GOSW	→ RDS, SWRDA, SWRA, EN, EA, CA, EH	→ Short	→ Nature, Landscape, Heritage, Resources, People
	→ Maximise take up of new agri-environment schemes, focussed on high quality environmental outcomes.	→ ERDP Regional Co-ordination group	→ GOSW, RDS, EA, EN, CA, EH, FWAG, NFU, CLBA, NT, NPAs, AONB Partnerships, WTs	→ Short	
	→ Ensure ERDP Regional Programming and Consultation Groups are accountable and representative to agree regional targeting and priorities and to ensure funds are spent strategically to support delivery of environmental objectives alongside social and economic objectives.	→ GOSW	→ RDS, EA, EN, CA, EH, NFU, FWAG, CLBA, REN, NT, WTs	→ Short	
	→ Develop a well-funded, accredited and co-ordinated approach to the provision of environmental management skills, training and advice to land managers, following review of the England Rural Development Programme.	→ GOSW	→ RDS, EA, EN, CA, EH, FWAG, NFU, CLBA, REN, NT, WTs	→ Medium	
	→ Investigate opportunities to increase support for woodland owners through review of the England Rural Development Programme.	→ ERDP Regional Co-ordination group	→ FC	→ Short	



Regional Priorities	Action	Who by Lead organisations partners		Timescale**	Links to Aims
Regional Objective: Food, Farming & Forestry: To enhance the ability of the food, farming and forestry sectors to provide the environmental and social benefits that people in the region need and expect, and help to secure a viable future for them.					
Develop an integrated approach to rural land use to support better delivery of environmental objectives	<ul style="list-style-type: none"> ➔ Assess the risks and opportunities that changing economic and social drivers have for the environment of the South West. ➔ Use existing partnerships such as Protected Landscapes, ERDP Regional Consultation Group, South West Forest and the Market and Coastal Towns Initiative to identify best environmental practice in delivery of integrated land use. ➔ Develop a framework by which the natural unit/ecosystem based approach to delivery of environmental outcomes is embedded in other relevant programmes, such as the Sustainable Farming and Food programme. 	<ul style="list-style-type: none"> ➔ SWCORE ➔ REN ➔ EN, RDS 	<ul style="list-style-type: none"> ➔ SWRDA, EA, REN ➔ SW Rural Affairs Forum, SWPLF, CA, SWRDA ➔ REN, GOSW, FC, CA, SW Forest, NPAs, AONB Partnerships 	<ul style="list-style-type: none"> ➔ Short ➔ Short ➔ Medium 	<ul style="list-style-type: none"> ➔ Nature, Landscape, Heritage, Resources, People
Provide healthy, profitable food and drink and an enhanced environment	<ul style="list-style-type: none"> ➔ Investigate opportunities, and support activity, to encourage buying policies that use more regional and local produce, for example, public sector procurement and supermarket sourcing policy. ➔ Develop better co-ordination between regional and local food links, including development of natural-unit based brands, through sharing information and best practice. ➔ Encourage development of sustainable fisheries and appropriate branding. ➔ Increase take-up of accredited environmental management skills within the food and drink sector through development of more integrated business advice. ➔ Use public sector procurement to develop capacity at the local level for support of a sustainable food system in the region. ➔ Promote linkages between environmental responsibility in food production with quality and traceability. 	<ul style="list-style-type: none"> ➔ SWRDA ➔ SW Food Links ➔ Invest in Fish ➔ Farm Connect ➔ GOSW ➔ RDS 	<ul style="list-style-type: none"> ➔ GOSW, SSW, NFU ➔ GOSW, HSW, NT SWRDA, NPAs, AONB Partnerships ➔ SWRDA ➔ LSCs, HSW ➔ DEFRA, SWRDA ➔ GOSW, SWRDA 	<ul style="list-style-type: none"> ➔ Short ➔ Short ➔ Medium ➔ Medium ➔ Short ➔ Medium 	<ul style="list-style-type: none"> ➔ Resources, People



Regional Priorities	Action	Who by Lead organisations partners		Timescale**	Links to Aims
Regional Objective: Tourism: To promote a tourism and leisure industry that conserves and enhances the environment and recognises the region's distinctiveness					
Better understand the impacts of tourism and leisure on the environment and communities	<ul style="list-style-type: none"> ➔ Support research into how communities interact with tourism and leisure. ➔ Link health promotion activities in the South West to tourism, leisure and the natural environment. ➔ Fund research into the environmental impacts of tourism and leisure on the region's environment and develop a framework for reducing the impacts and maximising the benefits. 	<ul style="list-style-type: none"> ➔ SWT ➔ Strategic Health Authorities, PCTs ➔ SWT 	<ul style="list-style-type: none"> ➔ Sustainable Tourism Forum, SSW, LAs, NT ➔ LSPs, LAs ➔ Sustainable Tourism Forum, SSW, LAs, NT 	<ul style="list-style-type: none"> ➔ Short ➔ Medium ➔ Short 	<ul style="list-style-type: none"> ➔ Short Nature, Resources, Landscape, People, Heritage
Enhance the resource	<ul style="list-style-type: none"> ➔ Provide a greater choice of quality destinations and facilities for visitors by encouraging links between environmental attractions, local suppliers and facilities with environmental accreditation. ➔ Investigate opportunities to develop a regional visitor payback scheme, allowing visitors to make a contribution to environmental management at the time of booking. ➔ Champion the development of visitor payback schemes and sustainable tourism through the 14 protected landscapes. ➔ Share experience of good practice around the region of improving access to the countryside, especially for urban dwellers and disadvantaged people such as those with disabilities or on low incomes. ➔ Develop an understanding of how tourist activities directly utilising natural resources, such as recreational fishing, walking and riding, can be managed sustainably. 	<ul style="list-style-type: none"> ➔ SWT ➔ SWT ➔ SWPLF ➔ SWPLF ➔ Sustainable Tourism Group 	<ul style="list-style-type: none"> ➔ EN, Sustainable Tourism Group, NT ➔ LAs ➔ AONB Partnerships, NPAs, LAs, SWT, NT, Sustainable Tourism Group ➔ NT, EH, EN, NPAs, AONB Partnerships ➔ CA, EA, EN, NT 	<ul style="list-style-type: none"> ➔ Short ➔ Medium ➔ Medium ➔ Short ➔ Medium 	<ul style="list-style-type: none"> ➔ Nature, Landscape, Heritage, Resources, People



Regional Priorities	Action	Who by Lead organisations partners		Timescale**	Links to Aims
Regional Objective: Tourism: To promote a tourism and leisure industry that conserves and enhances the environment and recognises the region's distinctiveness					
Reduce the impact of tourism on the environment	<ul style="list-style-type: none"> ➔ Review the success of the Green Audit scheme and develop an initiative for the tourism and leisure industry to increase their environmental management skills linked to quality accreditation. ➔ Encourage good environmental practice amongst businesses and destinations in the South West by developing sustainable tourism awards, based on the Future Footprints initiative. ➔ Support Beacon Councils in Sustainable Tourism and roll out of best practice and innovative approaches across the region. ➔ Develop a destination management product for the region enabling destination managers and those with an influence in tourism management at local level to understand the issues and better support the tourism and leisure industry, the local community and the environment. ➔ Trial the destination management approach at the region's three World Heritage Sites and 14 Protected Landscapes. ➔ Facilitate relationships between tourism organisations and bus operators and actively promote the public transport network to tourists. ➔ Investigate opportunities, and support activity, to encourage buying policies that use more regional and local produce, for example, in the tourism and hospitality industries. 	<ul style="list-style-type: none"> ➔ SWT ➔ Sustainable Tourism Forum ➔ Sustainable Tourism Forum ➔ SWT ➔ SWPLF, SWT ➔ First Bus, LAs ➔ SWRDA, SWT 	<ul style="list-style-type: none"> ➔ LAs, tourism industry, SWRDA, HSW ➔ SWT, SSW, SWRDA, HSW ➔ LAs ➔ SSW, Sustainable Tourism Forum ➔ EN, EH, LAs, NT, NPAs, AONB Partnerships ➔ EN, EH, LAs, NT ➔ Tourism industry 	<ul style="list-style-type: none"> ➔ Short ➔ Short ➔ Short ➔ Short ➔ Short ➔ Medium ➔ Medium 	<ul style="list-style-type: none"> ➔ Nature, Landscape, Heritage, Resources, People



Regional Priorities	Action	Who by Lead organisations partners		Timescale**	Links to Aims
Regional Objective: Spatial Planning: To promote the wise use of land and a safe and healthy environment for local communities, through the provision of well designed, resource efficient development, contributing to sustainable development through environmental enhancement and ensuring that the South West remains a region of diverse and distinctive heritage, wildlife and landscapes.					
Planning for people	<ul style="list-style-type: none"> ➔ Integrate environmental objectives into regional work to support the sustainable communities agenda. ➔ Integrate environmental objectives into regeneration and renewal through Creating: Excellence, sharing skills and knowledge. ➔ Promote the integration of environmental improvement into urban regeneration programmes and funding streams. ➔ Improve and maintain the standard of Local Environment Quality in problem areas in the South West, particularly in tourist destinations. ➔ Disseminate good practice/lessons learnt from CABA Space Advisory Scheme to improve green spaces across the region. ➔ Ensure that Community Strategies and Local Development Frameworks help deliver and are informed by regional environment priorities. ➔ Pilot a rural and urban based Local Development Framework to demonstrate how environmental objectives can be integrated. ➔ Work with CABA Unit to implement a comprehensive programme of work for improving green space in the region. ➔ Work with Creating: Excellence to promote exemplars of sustainable living in the region. 	<ul style="list-style-type: none"> ➔ SWRA ➔ Creating: Excellence ➔ EA ➔ ENCAMS ➔ Pilot LAs ➔ GOSW ➔ GOSW, SWRA ➔ LAs ➔ Creating: Excellence 	<ul style="list-style-type: none"> ➔ GOSW, LAs, SWRDA, REN ➔ LSPs, LAs, SWRDA ➔ LAs, SWRDA, GOSW ➔ LAs, DEFRA ➔ LAs, SWLGA ➔ LAs, LSPs, SWRA, EA, EH, EN, CA ➔ LAs, SWRDA, EN, EA, EH, CA ➔ EN, ENCAMS ➔ SWRDA, GOSW, SWRA, LAs, HLF 	<ul style="list-style-type: none"> ➔ Short ➔ Short ➔ Medium ➔ Medium ➔ Short ➔ Medium ➔ Short ➔ Short ➔ Short 	<ul style="list-style-type: none"> ➔ Nature, Landscape, Heritage, Resources, People
Positive planning for the environment	<ul style="list-style-type: none"> ➔ Incorporate policies in Regional Spatial Strategy and Local Development Frameworks to support positive planning for the environment, including habitat restoration, corridor links, urban green spaces, and locally distinctive design, where appropriate. ➔ Incorporate policies in Regional Spatial Strategy and Local Development Frameworks to manage the implications of climate change. ➔ Integrate sustainable construction into regional policy and planning, through promotion of Future Foundations and policies in Regional Spatial Strategy and the Regional Housing Strategy. 	<ul style="list-style-type: none"> ➔ SWRA ➔ SWRA ➔ Future Foundations 	<ul style="list-style-type: none"> ➔ GOSW, LAs, EN, EA, CA, EH ➔ SWCCIP, LAs, EA, EH, EN ➔ Future Foundations 	<ul style="list-style-type: none"> ➔ Short ➔ Short ➔ Short 	<ul style="list-style-type: none"> ➔ Nature, Landscape, Heritage, Resources, People



Regional Priorities	Action	Who by Lead organisations	Who by partners	Timescale**	Links to Aims
Regional Objective: Spatial Planning: To promote the wise use of land and a safe and healthy environment for local communities, through the provision of well designed, resource efficient development, contributing to sustainable development through environmental enhancement and ensuring that the South West remains a region of diverse and distinctive heritage, wildlife and landscapes.					
	<ul style="list-style-type: none"> ➔ Champion heritage-led regeneration in PUs and natural environment-led regeneration through the region's 14 protected landscapes. ➔ Investigate the opportunity to support well-managed, accessible, multi-functional urban-rural fringe areas through Regional Spatial Strategy and Local Development Frameworks. ➔ Support skills and training initiatives to integrate sustainable construction practices into mainstream construction. 	<ul style="list-style-type: none"> ➔ SWPLF, NT ➔ SWRA ➔ SWRDA 	<ul style="list-style-type: none"> ➔ AONB Partnerships, NPAs ➔ GOSW, LAs, CA ➔ Skills and training providers, Future Foundations 	<ul style="list-style-type: none"> ➔ Medium ➔ Short ➔ Medium 	
Integrate environment into planning	<ul style="list-style-type: none"> ➔ Promote the use of Quality of Life Capital tool to assist integrated environmental decision-making. ➔ Support the use of tool-kits such as Landscape Character Assessment and Historic Landscape Character Assessment in the planning process (including Regional Spatial Strategy and Local Development Framework preparation where appropriate) and produce a simple guide on which tool to use for different purposes. ➔ Promote regional coverage of Landscape Character Assessments. ➔ Conserve and enhance local distinctiveness through support for parish plans and village design statements. ➔ Support implementation of the Strategic Environmental Assessment Directive in the South West through development of a practitioners network to provide advice, training and good practice examples. ➔ Carry out a regional assessment of the coastal and other flood risk management measures required in the context of climate change, and identify opportunities for managed realignment. ➔ Investigate opportunities for creating/recreating natural ecological systems for managing the effects of climate change, such as restoring natural floodplains. 	<ul style="list-style-type: none"> ➔ EN, EA, CA, EH ➔ EN, EA, CA, EH ➔ CA, SWPLF ➔ CA, LAs ➔ SEA network ➔ EA ➔ EA, EN 	<ul style="list-style-type: none"> ➔ LAs, NPAs, AONB Partnerships ➔ LAs, SWRA, GOSW, NPAs, AONB Partnerships ➔ LAs ➔ SWRA, LAs, EA, EN, EH, CA, NPAs, AONB Partnerships ➔ SWRA, Regional Observatory, Local Information Networks ➔ EN, Flood Defence Committees, LAs, SWRA, Coastal SMP Groups, NT ➔ LAs, NT, WTs 	<ul style="list-style-type: none"> ➔ Short ➔ Short ➔ Medium ➔ Medium ➔ Short ➔ Short ➔ Long 	<ul style="list-style-type: none"> ➔ Nature, Landscape, Heritage, Resources, People



Regional Priorities	Action	Who by Lead organisations partners		Timescale**	Links to Aims
Regional objective: Transport: To minimise the environmental impact of the travel and transport necessary to support the social and economic needs of the region.					
Minimise the impact of transport on the environment	<ul style="list-style-type: none"> ➔ Work with Government, transport authorities and transport providers to provide a balanced approach including selective investment, demand management and alternative public transport in Local Transport Plans. ➔ Support provision of a framework for implementation of demand management in the development of future Regional Transport Strategy. ➔ Build on existing good practice in the region to develop and implement green travel plans, targeting major regional employers and travel generators. ➔ Establish mechanisms to support transport authorities in integrating environmental objectives into Local Transport Plans and Regional Transport Strategy through Strategic Environmental Assessment. 	<ul style="list-style-type: none"> ➔ GOSW, SWRA ➔ SWRA, GOSW ➔ SWRA, GOSW ➔ SWRA 	<ul style="list-style-type: none"> ➔ LAs, transport providers ➔ LAs ➔ LAs, SWRDA ➔ SWRA, GOSW, LAs 	<ul style="list-style-type: none"> ➔ Medium ➔ Short ➔ Medium ➔ Short 	<ul style="list-style-type: none"> ➔ Nature, Landscape, Heritage, Resources, People
Provide safe, integrated transport systems, accessible to all	<ul style="list-style-type: none"> ➔ Use accessibility mapping in developing future Regional Spatial Strategy/ Regional Transport Strategy, particularly in development of sub-regional strategies. ➔ Support integration of transport and planning, including accessibility planning by working with service providers (e.g. Health, Education) to consider transport issues when preparing their strategies/policies. ➔ Promote regional exemplars of improving accessibility to the natural and historic environment. ➔ Develop good walking and cycling networks across the region. ➔ Share best practice around the region in the development of integrated river and coastal transport systems. ➔ Provide a co-ordinated approach to transport and development over functional areas through Regional Spatial Strategy/ Regional Transport Strategy. ➔ Work with transport providers to develop a regional exemplar of integrated travel options with integrated timetables, ticketing and so on. 	<ul style="list-style-type: none"> ➔ SWRA ➔ GOSW ➔ PLF ➔ LAs ➔ EN ➔ SWRA ➔ SWRA 	<ul style="list-style-type: none"> ➔ GOSW, LAs ➔ LAs, service providers, LSPs ➔ EH, CA, EN, LAs, GOSW, NT, NPAs, AONB Partnerships ➔ GOSW, Sustrans, NT ➔ LAs, NT ➔ GOSW, LAs, transport providers ➔ Transport providers 	<ul style="list-style-type: none"> ➔ Short ➔ Medium ➔ Medium ➔ Medium ➔ Medium ➔ Short ➔ Medium 	<ul style="list-style-type: none"> ➔ Resources, People
Provide alternatives to fossil-fuelled transport	<ul style="list-style-type: none"> ➔ Investigate the barriers to provision of alternatives to fossil-fuelled transport in the region. ➔ Trial alternatives to fossil-fuelled forms of bus transportation. 	<ul style="list-style-type: none"> ➔ GOSW ➔ First Bus 	<ul style="list-style-type: none"> ➔ SWRA, LAs ➔ LAs, transport providers 	<ul style="list-style-type: none"> ➔ Short ➔ Short 	<ul style="list-style-type: none"> ➔ Resources, People

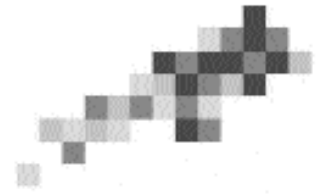


List of organisations

AONB Partnerships	Areas of Outstanding Natural Beauty Partnerships
CA	Countryside Agency
CBLA	Countryside and Business Landowners Association
CPRE	Campaign for the Protection of Rural England
DEFRA	Department for the Environment, Food and Rural Affairs
EA	Environment Agency
EH	English Heritage
EN	English Nature
ERDP	England Rural Development Programme
FC	Forestry Commission
FRESA Group	Framework for Regional Employment and Skills Action Group
FWAG	Farming and Wildlife Advisory Group
GOSW	Government Office for the South West
HEF	Historic Environment Forum
HLF	Heritage Lottery Fund
HSW	Horizon South West
LAs	Local Authorities
LSCs	Learning and Skills Councils
LSPs	Local Strategic Partnerships
MPAs	Minerals Planning Authorities
NFU	National Farmers Union
NHS	National Health Service
NPAs	National Park Authorities
NT	National Trust
ODPM	Office of the Deputy Prime Minister
PCTs	Primary Care Trusts
RAWP	Regional Aggregates Working Party
REN	Regional Environment Network
RDS	Rural Development Service
RSPB	Royal Society for the Protection of Birds
SFCs	Sea Fisheries Committees
SMPs	Shoreline Management Plans
SRPs	Sub-Regional Partnerships
SWBP	South West Biodiversity Partnership
SWCCIP	South West Climate Change Impacts Partnership
SWCORE	South West Chamber of Rural Enterprise
SW HECA Forum	South West Household Energy Conservation Advice Forum
SWLGA	South West Local Government Association
SWPLF	South West Protected Landscapes Forum
SWRA	South West Regional Assembly
SWRDA	South West Regional Development Agency
SWT	South West Tourism
SSW	Sustainability South West
WTs	Wildlife Trusts
WWF	World Wildlife Fund



This Strategy is supported by:



South West of England
Regional Development Agency



**GOVERNMENT OFFICE
FOR THE SOUTH WEST**



ENVIRONMENT AGENCY



ENGLISH HERITAGE

*This document has been produced with the support of
English Nature and The Environment Agency
and is printed on 100% post consumer waste paper.*

Please contact us on 01823 270101 if you would
like a copy of this document in large text



*South West Regional Assembly
Dennett House 11 Middle Street Taunton Somerset TA1 1SH
Tel: 01823 270101 Fax: 01823 425200 email: swra@southwest-ra.gov.uk
Web: www.southwest-ra.gov.uk*