

Flempton House
Flempton, Bury St Edmunds
Suffolk IP28 6EG
t. 01284 728151
www.eera.gov.uk



First Floor Suite, Council Offices
Nottingham Road, Melton Mowbray
Leicestershire LE13 0UL
t. 01664 502555
www.emra.gov.uk



The Axis Building, Maingate
Kingsway North, Team Valley
Gateshead NE11 0NQ
t. 0845 673 3343
www.northeastassembly.gov.uk



Wigan Investment Centre
Waterside Drive
Wigan WN3 5BA
t. 01942 737916
www.nwra.gov.uk



Berkeley House
Cross Lanes, Guildford
Surrey GU1 1UN
t. 01483 555200
www.southeast-ra.gov.uk



Dennett House
11 Middle Street, Taunton
Somerset TA1 1SH
t. 01823 270101
www.southwest-ra.gov.uk



Regional Partnership Centre
Albert House, Quay Place
92-93 Edward Street
Birmingham B1 2RA
t. 0121 245 0200
www.wmra.gov.uk



18 King Street
Wakefield
WF1 2SQ
t. 01924 331555
www.yhassembly.gov.uk



City Hall
The Queen's Walk, More London
London SE1 2AA
t. 020 7983 4100
www.london.gov.uk



English Regions Network



Working with Regional Assemblies

www.ern.gov.uk

The English Regions Network (ERN) is the umbrella organisation for England's nine partnership Regional Assemblies. ERN represents the collective views of Regional Assemblies to Government and other key national and European institutions, encourages new thinking and research on the regional agenda, and shares best practice and facilitates inter-regional networking amongst Assemblies.

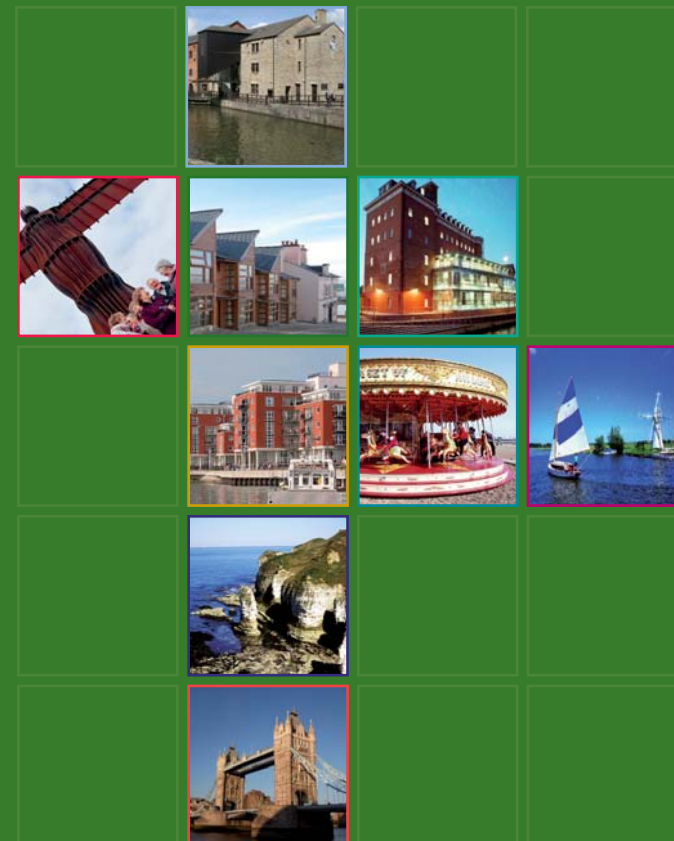
For further information please contact:

English Regions Network
Regional Partnership Centre
Albert House, Quay Place
92-93 Edward Street
Birmingham
B1 2RA

t: 0121 678 1062
e: info@ern.gov.uk
w: ern.gov.uk

Regional Assemblies

Extending LOCAL Influence



Regional Assemblies: representing the regions

Extending local influence

Regional Assemblies are partnership bodies which bring together representatives from local government, business, environment and social sectors. Together they work to promote the economic, environmental and social well-being of the English regions.

Shaping future development of the regions

Regional Assemblies are essential regional bodies:

- providing the statutory framework for planning, housing, transport and sustainability;
- working with partners to improve the economy, the environment and people's quality of life;
- making sure that Regional Development Agencies are accountable to the region; and
- creating space for debate and a strong voice for the region nationally and internationally.

Delivering real change for the regions

Regional Assemblies play a vital role in developing a clear vision for the regions' futures:

- managing the difficult balance between economic, social and environmental issues;
- integrating and aligning regional policy to achieve region-wide cohesion;
- leading the region by making challenging decisions on planning, housing and transport.

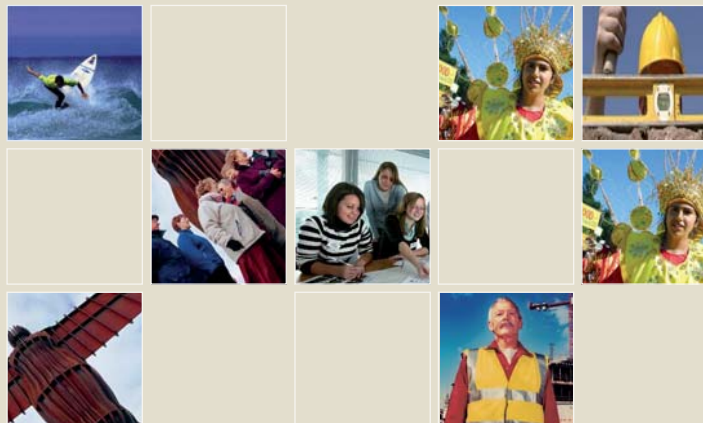
Did you know that...?

1. THE ASSEMBLIES ARE REPRESENTATIVE OF THE REGIONS THEY SERVE. The exact number and profile of Assembly Members varies from region to region. In general up to 70% of Members are elected local authority councillors and at least 30% are drawn from sectors such as business, arts and culture, faith, education, the environment, and the community and voluntary sector.

2. REGIONAL ASSEMBLIES HAVE SEVERAL STATUTORY RESPONSIBILITIES. As the Regional Planning Body they prepare a Regional Spatial Strategy which includes strategies on transport, waste and sustainable development. They also have responsibility for the Regional Housing Board. In addition, the Assemblies are the designated body a Regional Development Agency must consult in the preparation of its Regional Economic Strategy.

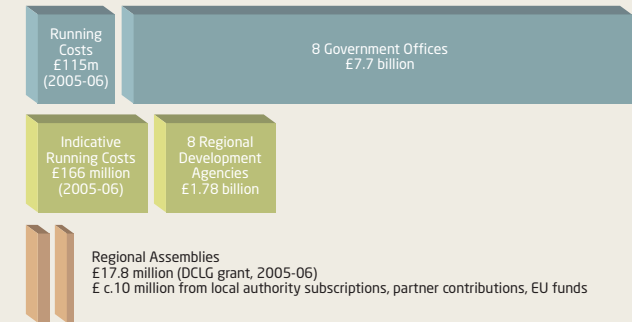
3. ARRANGEMENTS IN LONDON ARE DIFFERENT to those of the eight partnership regional Assemblies. London has the Greater London Authority (GLA) which is a unique form of strategic citywide government. It is made up of a directly elected Mayor and a separately elected Assembly.

"Councils and Communities in Partnership"



4. THE ASSEMBLIES PROVIDE EXCEPTIONAL VALUE FOR MONEY. Core activities are carried out at a fraction of the cost of other regional bodies.

Total Budgets of Government Offices, Regional Development Agencies and Regional Assemblies



Sources: GOs – House of Commons written answer, 2nd May 2006; RDAs – House of Commons written answer, 10 May 2006; Regional Assemblies – Individual business plans and accounts

5. THE ENGLISH REGIONS NETWORK (ERN) IS THE UMBRELLA BODY that represents the collective views of the nine Assemblies to Government and other key national and European institutions. The ERN facilitates inter-regional networking amongst Assemblies as well as encouraging new thinking and research on regional issues.

