



Communications Network Meeting

Total Place: South West

Drew Aspinwall

28 April 2010

STRATEGIC LEADERS' BOARD • SOUTH WEST COUNCILS • SOUTH WEST EMPLOYERS • IMPROVEMENT & EFFICIENCY PARTNERSHIP

SUPPORTED BY THE SOUTH WEST SECRETARIAT

Total Place

Presentation Overview:

- What is Total Place?
- What is happening in the South West?
- South West Initiatives & National Pilot
- Next Steps



Economic Crisis: How can Councils respond?

The impact of the economic downturn means that all of the public sector needs to find radical new solutions to deliver better value for money, and also better local services.

- **Total Place**
- Wider efficiency agenda
- Good old fashioned cuts
- Smaller Government
- Putting the Frontline First: Smarter Government – Strengthen role of citizen and civic society; re-cast relationship between the centre and the frontline; streamline centre for sharper delivery



The Total Place Approach

Total Place looks at how a 'whole area' approach to public services can lead to better services at less cost.

Seeks to identify overlap and duplication between organisations.

- **The Goal**

delivering more with less,
designed around the needs of the user.

- **The Means**

Asking fundamental questions about how public money is spent in places and how services can be improved to drive improved outcomes and greater efficiency.

- **The Purpose**

cut out waste, overlap, duplication of effort to help make sure that every pound of taxpayers money is working as hard as it can.



Total Place: A “whole area” approach

Three key components:

- 1) Mapping the money in area and by theme
- 2) Use pilots as laboratories to identify local and national barriers to making delivery systems more efficient and effective.
- 3) Designing services around the needs of users

Learning and change will happen:

- a) In places – breaking down silo barriers to focus on better value for money in the delivery of services to the user.
- b) In Whitehall, changing structures/systems to allow places to achieve more with less. Removing central barriers to delivery.



13 pilot areas across the 9 regions

- Birmingham: Health, housing and crime
- Bradford: supporting people back into independence
- Bedfordshire & Luton: Guidance and support needs
- Coventry, Hull & Warwickshire: Experience of children and carers
- Croydon: Children's health
- **Bournemouth, Dorset & Poole: Services for older people**
- Durham: Housing in relation to regeneration
- Kent: Full range services
- Leicester & Leicestershire: Alcohol and drug abuse
- Lewisham: Re offending minimisation
- Manchester & Warrington: Young children – well being
- South Tyneside, Gateshead & Sunderland: safer, stronger healthier neighbourhoods
- Worcestershire: Greatest need – range of themes



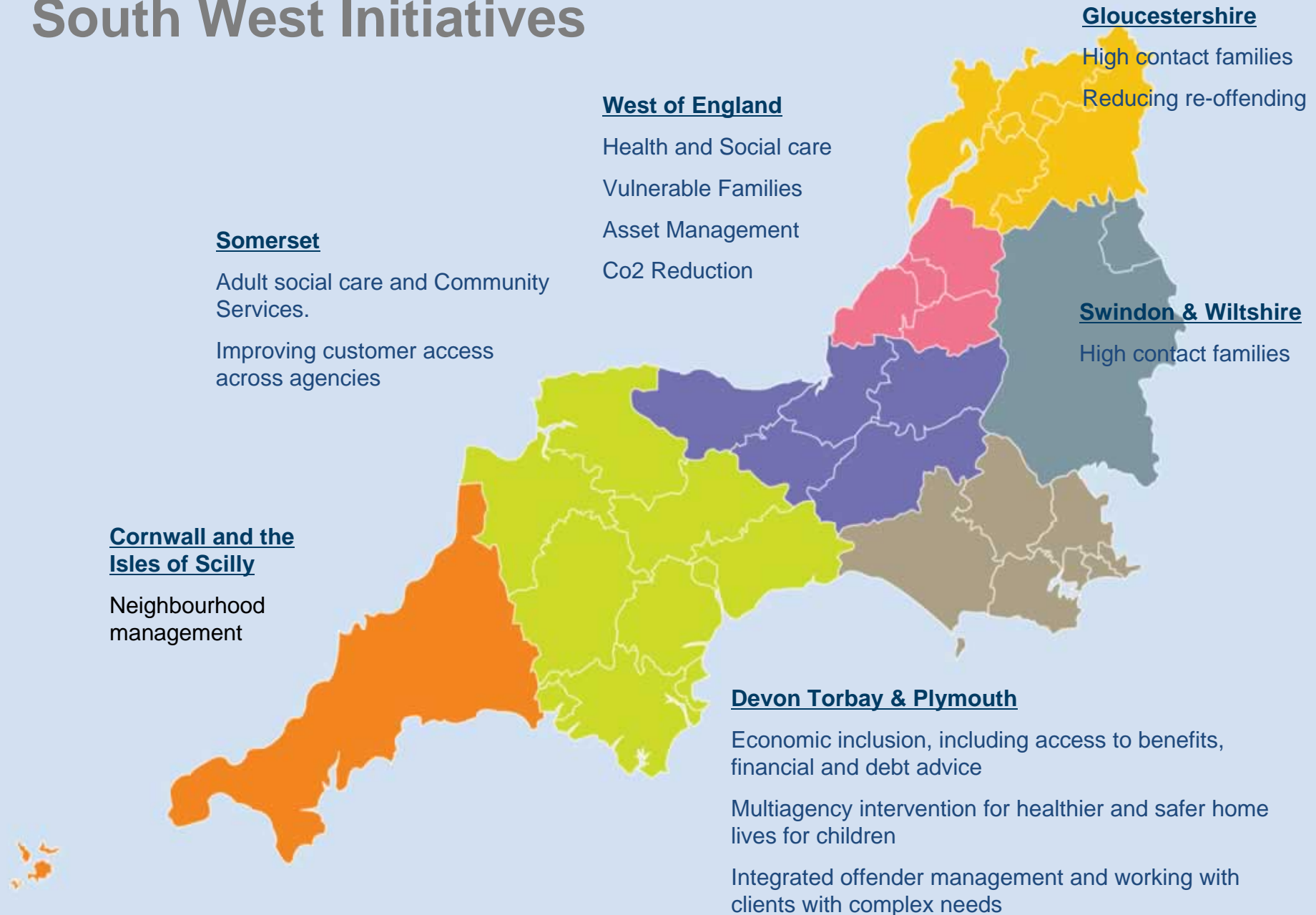
South West Total Place Initiatives

The Improvement & Efficiency Partnership gave each area £250,000 (£500,000 to WoE) (£1.75m in total) to look at their areas in terms of Total Place.

- Cornwall and the Isles of Scilly
- Devon, Plymouth and Torbay
- Gloucestershire
- Somerset
- West of England (Bath and North East Somerset, Bristol, North Somerset, South Gloucestershire)
- Wiltshire and Swindon
- *Bournemouth, Dorset & Poole (National Total Place Pilot)*



South West Initiatives



Gloucestershire

- The focus is on 'dysfunctional families' and reducing re-offending, with a particular emphasis on improving the co-ordination of, and capacity to deliver, domestic abuse interventions to avoid re-offending.

Devon/Plymouth and Torbay

- The project will address the issues experienced by families and individuals with the most complex needs, living in the most deprived areas of the sub-region. The three interlinked elements of the project are economic inclusion, integrated offender management and multi agency intervention for healthier and safer home lives for children.

West of England

- The project's focus is sustainable communities and contains four work streams:
 - Think Family – delivering improved outcomes/services for families and young people, more effective use of resources and reduction in duplication;
 - Improving Services in the Community – developing new ways of commissioning and providing adult social care provision
 - Low Carbon – analysing carbon footprint, assessing the economic impact of climate change and peak oil and ensuring that local economic development activity takes full account of the challenges and opportunities ahead.
 - Asset Management - achieving better use of joint assets.



Somerset

- The core cross cutting theme of the Somerset Total Place programme is 'to remove barriers to health and well being'. The project will focus on individuals and families with complex and high level needs. Activity will be focused on:
 - transforming health related community services
 - transforming support for families with the highest needs

Wiltshire and Swindon

- Working closely with a range of partners, including the Police and NHS, Wiltshire and Swindon Councils will remove the obstacles to wellbeing with the active participation of individuals within communities. 'Total Place' will focus on creating and sustaining an environment in which people can be physically and emotionally healthy.

Cornwall and Isles of Scilly

- The project's focus is Neighbourhood Management Services. It aims to strengthen and clarify the council's approach to community engagement, neighbourhood management, consultation and small community regeneration.



Emerging Themes

Several of the projects in the South West include a focus on Chaotic Families:

- Gloucestershire
- Swindon and Wiltshire
- Devon/Torbay and Plymouth
- West of England
- Somerset

Pilots have now reported

- Bournemouth, Dorset & Poole Total Place Pilot looked at:

“How can we secure improved outcomes for older people at less cost through improved collaboration between agencies, deeper engagement with citizens and communities and a genuine focus on place?”



Bournemouth, Dorset & Poole Total Place Pilot

The Project Board have published a report to Government which sets out the findings and conclusions of the work to date, and proposes a set of next steps.

The report identifies that money could be saved, and services improved, by:

- Reducing dependency on secondary health care and intensive adult social care
- Increasing investment in community service and preventative activity
- Sustaining investment in universal services and social capital
- **Savings:** It is anticipated that reducing the number of unplanned admissions, over a three year period, will result in cost savings totalling £18.3 million.

The estimated cost of alternative (preventative) provision, such as community dementia services, telecare services or extra care housing, is £6.6 million. Other costs yet to be quantified and factored in.

www.dorsetforyou.com



Next Steps

HM Treasury Report

Total Place: A whole area approach to public services **Published (25 March 2010)**

The Report sets out a new direction for local public services and significant new freedoms from central control.

- Freedoms from central performance and financial controls
- Freedoms and incentives for local collaboration
- Freedoms to invest in prevention
- Freedoms to drive growth

The Report brings together the extensive work over the last year by 63 local authorities, 34 primary care trusts, 13 police authorities and other partners, with more than 70 other local areas engaged in similar work.

Together the pilots have a population of more than 11 million people. The pilots have mapped more than £82 billion of public spending in their areas.

www.hm-treasury.gov.uk/psr_total_place.htm



Next Steps in the South West

In the region, it's still too early for any of our projects to quote specific findings or lessons learnt but interesting points are:

- The TP partnerships build on the LSP's and seem to be showing maturity in these relationships.
- Emphasis is on early prevention as a means to improve outcomes and cut costs longer term.
- Much of the work is on scoping what potential there is.
- **Regional Events:** SW IEP programme of events starting in June.
- **Ongoing support** from SW IEP / Network Meetings / Assistance in sharing the learning.
- **Awareness raising** with MPs / prospective candidates.
- Some South West initiatives are starting to develop **Communications Plans**



Total Place style approaches feature in Labour and Conservative election manifestos

The Conservatives say they will: **'Make politics more local'**

"We will put neighbourhoods in charge of planning the way their communities develop, with incentives in favour of sustainable development. We will make it easier for everyone to get onto the housing ladder. We will give individuals and local government much more power, allow communities to take control of vital services, and give people the chance to have a powerful, elected mayor in England's largest cities".

Labour say they will **devolve power.....**

"The new politics also means radical change to local public services. Our goal is for much greater local flexibility and responsiveness, so that services are shaped around the personal needs of citizens, not the silos of government departments. Greater accountability – with public services built around users, scrutinised by democratically elected local councils, and with clear rights of redress for citizens – will strengthen support for collectively provided services, while driving efficiency and effectiveness in expenditure.

Local government and its partners in public services are already pooling budgets across localities. Our radical Total Place agenda will take this further, giving local areas additional freedom to achieve better services and more savings, cutting bureaucracy and management costs, while placing a greater on early intervention".



More Information

- swcouncils.gov.uk
then click on Total Place
- localleadership.gov.uk/totalplace/

Contact

Drew Aspinwall

Principal Officer: Communications & Marketing

SW Councils

01823 425265

drew.aspinwall@swcouncils.gov.uk

www.swcouncils.gov.uk

